

IMPROVING QUALITY OF LIFE

# 2024 HOLIDAY GIFT IDEAS

FOR PEOPLE LIVING WITH DEMENTIA



---

AFFILIATE LINKS

## **DISCLAIMER**

This document may include affiliate links that Bambu Care may earn commission for at no extra cost to you.

# FRESHCUT PAPER POP UP FLOWER CARD

3D popup flower bouquet with a holiday greeting card and envelope. They have different styles for different occasions. This particular flower arrangement is of artificial birch poinsettias and is 9.5" tall.



[VIEW PRODUCT](#)

# GARDEN TOOL SETS

Does your partner enjoy gardening? Consider these an all-in-one kit options with everything they need to maintain their garden more easily.

**Please note:** Some of the tools can be sharp! Supervised use may be necessary for your partner.



[VIEW PRODUCT](#)



[VIEW PRODUCT](#)



# MINI FLOWER POTS

Resin mini flower pots to brighten up the space of any plant lover.

Please note: The plant is NOT included.



[VIEW PRODUCT](#)



[VIEW PRODUCT](#)



[VIEW PRODUCT](#)

# INDOOR GOLF

This portable golf mat is ideal for people with dementia who have enjoyed golf but can no longer visit the range. Its lifelike turf and smart ball return system provide an engaging way to practice putting skills from the comfort of home. The compact, easy-to-set-up mat offers a familiar and enjoyable activity, bringing the experience of golf to a safe, accessible indoor or backyard setting.



[VIEW PRODUCT](#)

# DIGITAL REMINDER CLOCKS

The Relish Day Hub (left) and The Idem Digital Dementia Clock (right) empower individuals living with dementia to achieve greater independence. They accomplish this by providing customizable alerts, ensuring that essential daily activities remain on schedule, enabling users to focus on what matters most. The Idem Digital Dementia Clock goes a step further, allowing caregivers to send, manage, and monitor reminders, messages, notes, and upcoming events.



[VIEW PRODUCT](#)



[VIEW PRODUCT](#)

# MUSIC PLAYERS

The Vintage Bluetooth Suitcase Record Player (left) is equipped with built-in speakers and a convenient LED display panel. Enjoy vinyl records at three different speeds, connect seamlessly to a phone for wireless streaming, or back up vinyl records to a USB flash drive or SD card. Additionally, it features a headphone jack for a private listening experience. Please note that assistance may be needed for the setup process.

The SMPL One-Touch Music Player (right) can be used to play audiobooks and mp3 music and is compatible with various devices including laptops and USB drives. It comes with 40 preloaded vintage hits. Its plug-and-play design makes it easy to use – simply lift the beige flap to start the music and close it to stop.



[VIEW PRODUCT](#)



[VIEW PRODUCT](#)



# AMAZON ECHO SHOW 5

The Echo Show 5's 5.5" display allows easy access to news, video calls, music, and smart home controls, all in a compact design with improved sound. Its built-in camera makes it simple to check in on family or pets, while customizable photo slideshows keep loved ones visually connected.



[VIEW PRODUCT](#)

# FLIPPER BIG BUTTON UNIVERSAL TV REMOTE

Designed to replace multiple remotes, it works with all major TVs and set-top boxes, combining TV and cable control in one device for simplified viewing. You can program up to 25 channels. It is designed solely for seniors with large color-coded tactile buttons for easy use. It can help your partner manage their entertainment independently, reducing caregiver time.



[VIEW PRODUCT](#)

# TALKER BUDDY

The Talker Buddy is a versatile communication device designed for easy use, with a soft-touch button layout. It includes a customizable recording feature, allowing users to add personalized phrases or familiar voices for more meaningful interactions. Ideal for individuals with dementia or speech difficulties, it provides a simple way to communicate essential needs or messages.



[VIEW PRODUCT](#)

# TALKING WATCHES

Talking watches, such as the Five Senses Atomic Clock Watch [digital] (left) and the Harkent Talking Watch [analog] (right), provide enhanced accessibility and convenience for individuals with visual impairments. Both watches feature intuitive designs that deliver clear, audible time announcements, making them ideal for those who rely on auditory cues. With automated time-setting, easy-to-read displays, and reliable voice guidance, these watches are essential tools for improving daily life and fostering greater independence.



[VIEW PRODUCT](#)



[VIEW PRODUCT](#)

# NOISE-REDUCTION EARMUFFS

These noise-reducing earmuffs are a great option for individuals with dementia who have auditory sensitivity or become easily overstimulated by noise. With a solid ABS shell, thickened foam, and an NRR 28 dB (SNR 34 dB) rating, they effectively reduce high-decibel noise, providing relief in loud environments. The soft, padded headband and adjustable ear cups ensure a comfortable fit, while the compact, folding design makes them easy to store and carry.



[VIEW PRODUCT](#)



# NECK BOOK LIGHT

The Glocusent Neck Reading Light combines versatility, comfort, and convenience with its 3 color modes—yellow, warm white, and cool white—and 6 adjustable brightness levels, perfect for activities like reading, crocheting, knitting, and more. Its ergonomic, hands-free design includes flexible arms to adjust the light angle for maximum comfort, while a blue light filter protects eyes from strain.



[VIEW PRODUCT](#)

# LED PAGE MAGNIFIER

LED page magnifier with anti-reflective coating to reduce glare and strain to the eyes. It offers three lighting options - cool, warm, or mixed. You'll need 3 AAA batteries (not included). It's a wonderful gift option for those with dementia who love reading but may find it challenging due to low vision.



[VIEW PRODUCT](#)

## WEIGHTED PENS

This weighted pen set is designed to support those with tremors or low dexterity, offering a balanced grip that's easier to control than wide pens. Each pen contains high-quality black ink with a smooth 100mm rollerball tip for clean, precise writing. The set includes three refillable pens in Rose Gold, Gold, and Silver, along with three refills and a storage box.



[VIEW PRODUCT](#)

# HIMALAYAN SALT LAMP

This Himalayan salt lamp is hand-carved measuring approximately 4.5-5" in height and weighing 1.5-12 lbs. Known for its calming properties, it casts a soothing, multi-colored glow that's perfect for creating a relaxing environment. The lamp also serves as a natural ionizer, releasing negative ions to help purify the air.



[VIEW PRODUCT](#)



# GALAXY PROJECTOR

This galaxy projector combines LED colors and stars to create a vibrant, flowing effect on walls or ceilings, enhancing any room's atmosphere. With 7 LED background colors and adjustable brightness, it provides a customizable light show that's viewable from different angles. It is controlled using the onboard buttons or an RF remote to adjust colors, lighting modes, and speed. It even responds to sound in sound mode. A built-in timer and sleep mode allow for automatic shut-off.



[VIEW PRODUCT](#)



# ACCESSIBLE CUPS

Two accessible cup options: Iron Flask 16oz Co-Pilot Insulated Mug with Straw (left) and Plastic Beer Glasses 16oz (right).



[VIEW PRODUCT](#)



[VIEW PRODUCT](#)

# ACCESSIBLE DINNERWARE

Two accessible dinnerware sets: Power of Red Dinnerware Set (left) and Wheat Straw Dinnerware Set (right).



[VIEW PRODUCT](#)



[VIEW PRODUCT](#)

## 2-IN-1 LONG-HANDLED SHOWER BODY BRUSH

This 2-in-1 long-handled shower body brush offers the convenience of bristle brush and loofah in one. It's designed for both wet and dry brushing, helping to stimulate blood circulation, remove dead skin, and improve skin health. The long, curved, non-slip handle makes it easy to reach hard-to-access areas like the back and feet.



[VIEW PRODUCT](#)

# ADAPTED NAIL CLIPPERS

This nail clipper set provides everything a person need for easy, at-home nail care. The extra-wide openings of the clippers make them ideal for cutting large, thick nails with ease, while the rotating head allows for easy adjustment to the perfect angle. The long handles offer a comfortable grip and require less pressure, making them suitable for both right- and left-handed users.

**Please note:** If your partner has diabetes or specific foot issues, it may be best to consult a podiatrist before they attempt to cut their own nails. Supervision or assistance may be required for others.



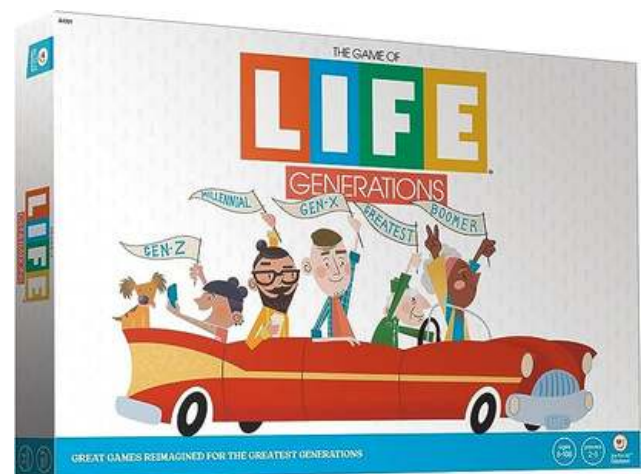
[VIEW PRODUCT](#)

# BOARD GAMES

Board games are a great way to have a little family fun. These games have been reimagined by Joy for All to increase accessibility for all players of varying abilities and ages. Showcased below are: Trivial Pursuit Generations (left), The Game of Life Generations (right), and Scrabble Bingo (bottom).



[VIEW PRODUCT](#)



[VIEW PRODUCT](#)



[VIEW PRODUCT](#)



# BINGO GAME

This simplified Bingo set is designed to engage individuals with dementia in a fun, accessible activity. With 29 large calling cards, 54 bingo chips, and 6 double-sided boards, it includes oversized numbers (1-29) for easy visibility. The set offers two variations to adjust for different abilities and comes in a compact storage box for easy organization and travel. Ideal for group play, it provides a meaningful way for family and friends to connect.



[VIEW PRODUCT](#)

# CARD GAMES

Start a conversation or play a game! Showcased below are: Lyric and Idiom Matching Card Game (left), Ice Breaker Conversation Cards by Talking Point (right), and Keeping Busy Let's Chat Conversation Cards (bottom).



[VIEW PRODUCT](#)



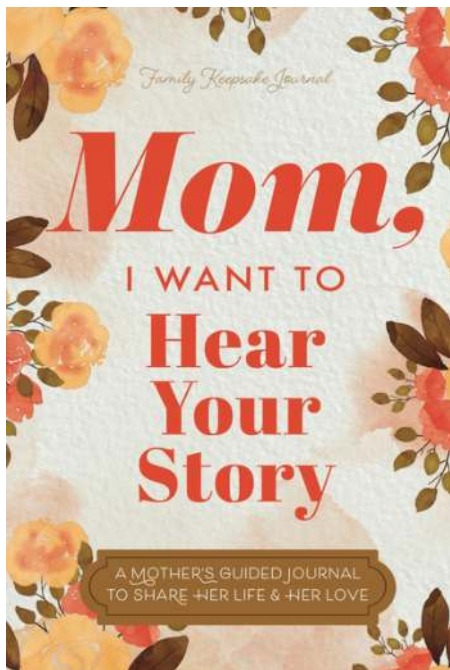
[VIEW PRODUCT](#)



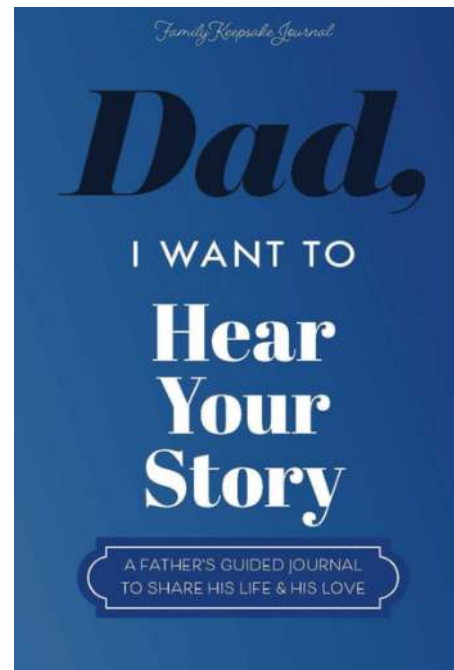
[VIEW PRODUCT](#)

# GUIDED LIFE JOURNAL

Guided journal filled with over 250 prompts that encourage your parent to share their memories and life experiences, creating a lasting keepsake for your family. The information shared can also help you provide better care as your partner's dementia progresses.



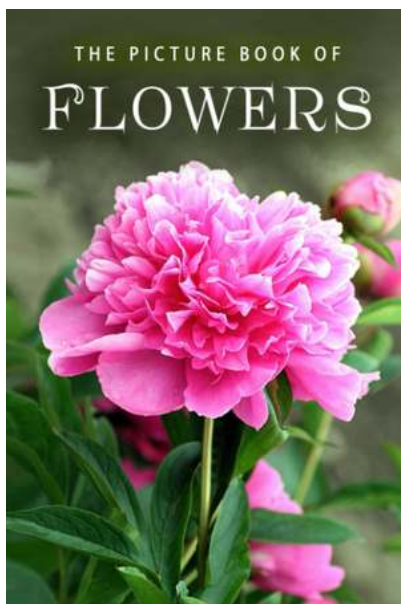
[VIEW PRODUCT](#)



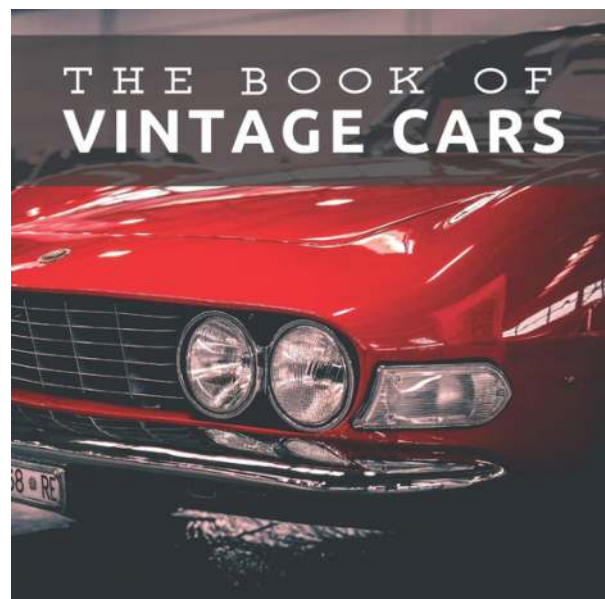
[VIEW PRODUCT](#)

# REMINISCENCE PICTURE BOOKS

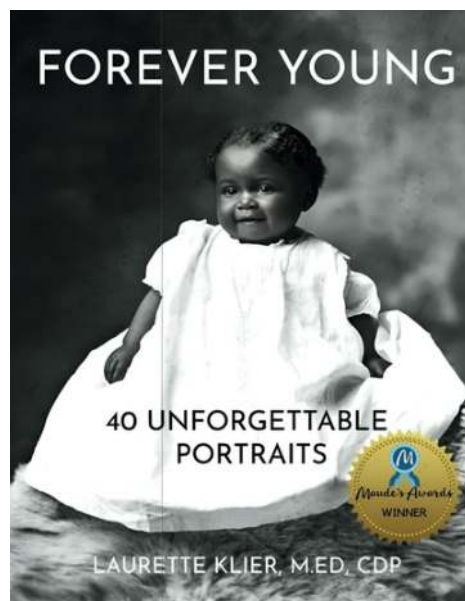
Reminiscence picture books provide a gentle way to spark memories and meaningful conversations. With familiar images these books help create moments of joy and connection.



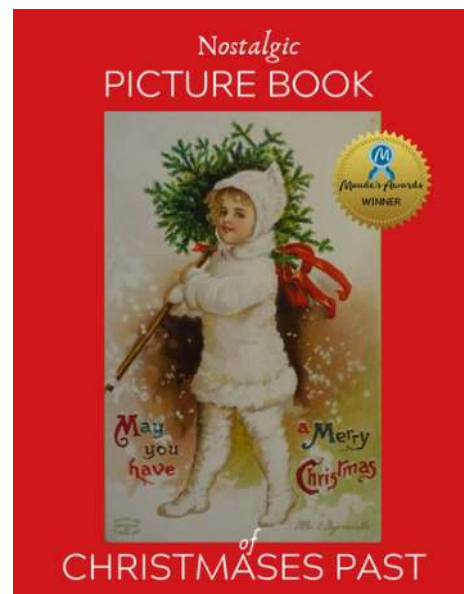
[VIEW PRODUCT](#)



[VIEW PRODUCT](#)



[VIEW PRODUCT](#)

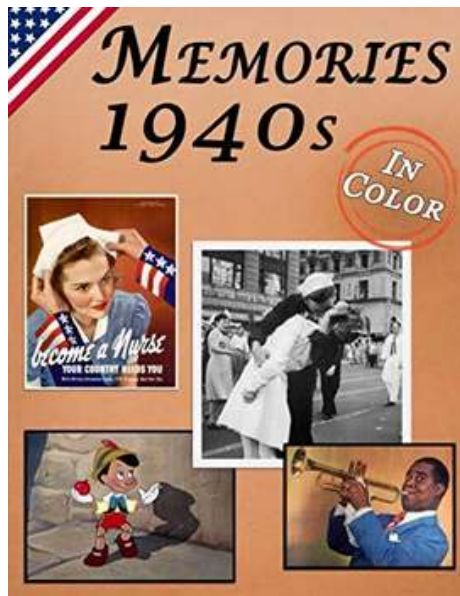


[VIEW PRODUCT](#)

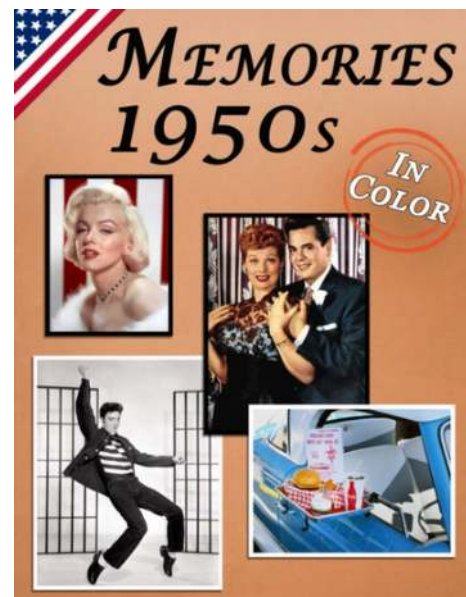


# REMINISCENCE PICTURE BOOKS

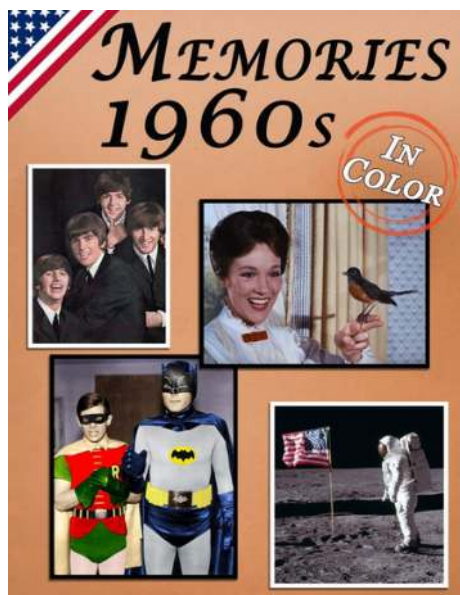
Reminiscence picture books provide a gentle way to spark memories and meaningful conversations. With familiar images these books help create moments of joy and connection.



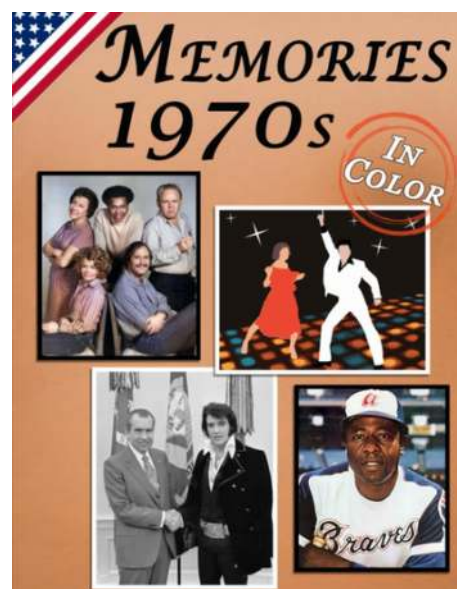
[VIEW PRODUCT](#)



[VIEW PRODUCT](#)



[VIEW PRODUCT](#)

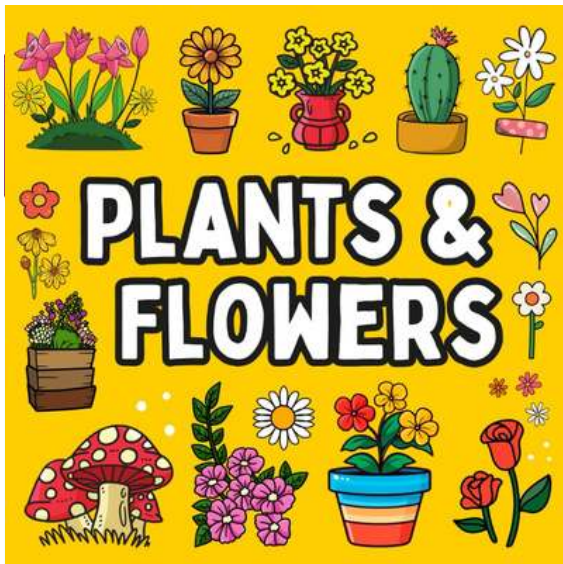


[VIEW PRODUCT](#)

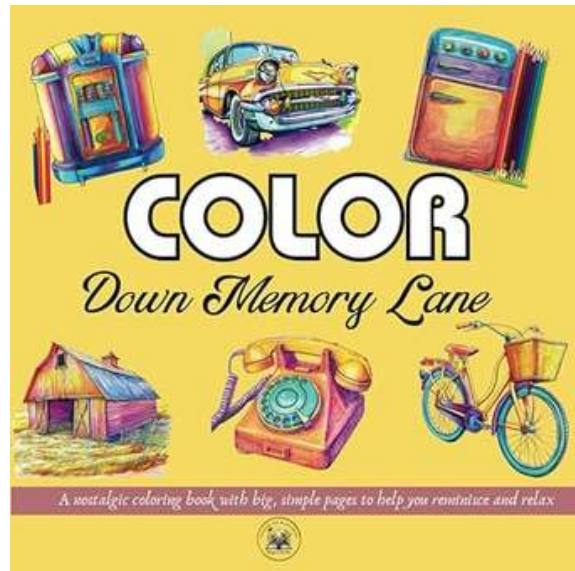


# COLORING BOOKS

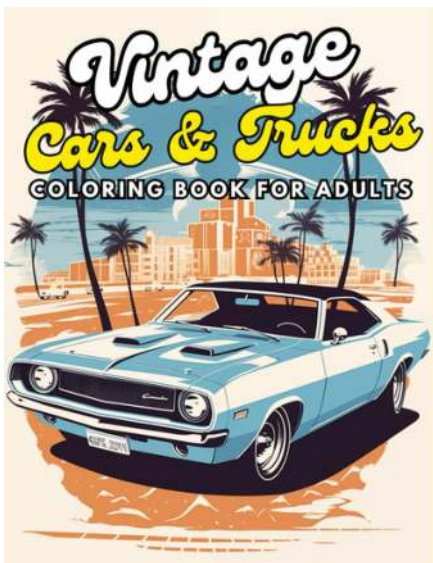
Coloring isn't just for kids. People of all ages find real joy in expressing their creative side through coloring. There are a number of great coloring book options for older adults. Below are just 5 options!



[VIEW PRODUCT](#)



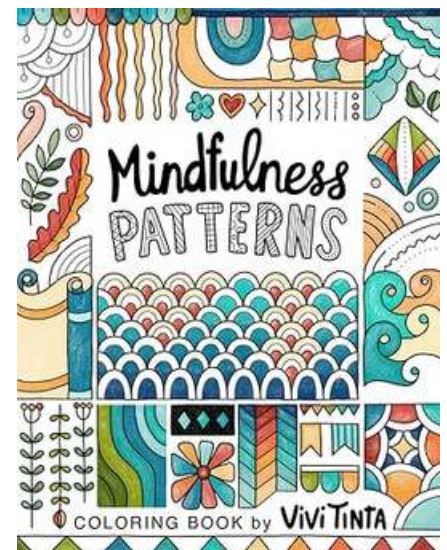
[VIEW PRODUCT](#)



[VIEW PRODUCT](#)



[VIEW PRODUCT](#)

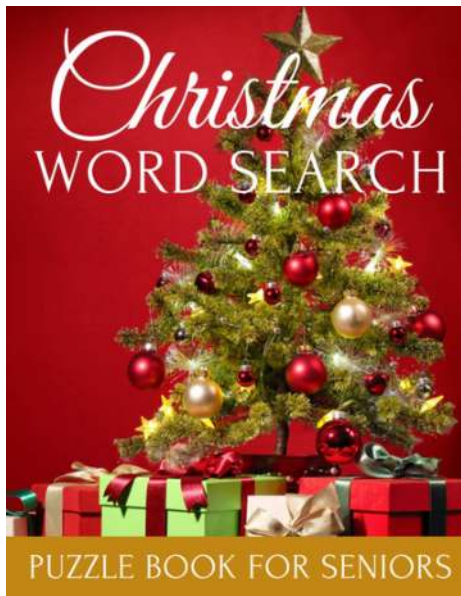


[VIEW PRODUCT](#)

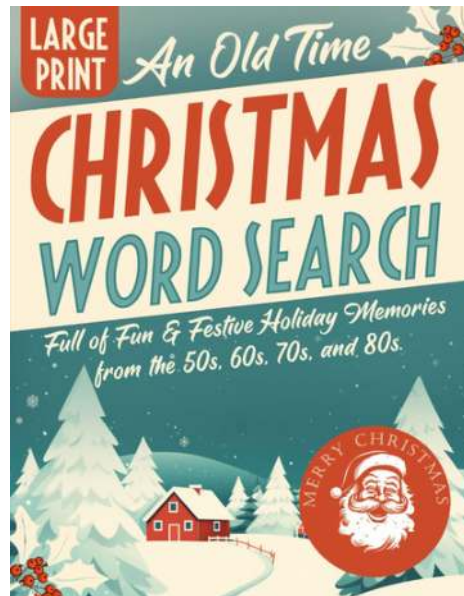


# CHRISTMAS-THEMED PUZZLE BOOKS

Does your partner love Christmas? Help them get in the spirit with these themed large print word searches and activities!



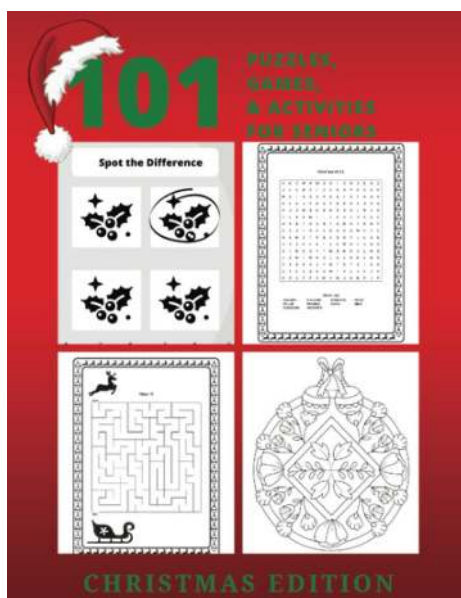
[VIEW PRODUCT](#)



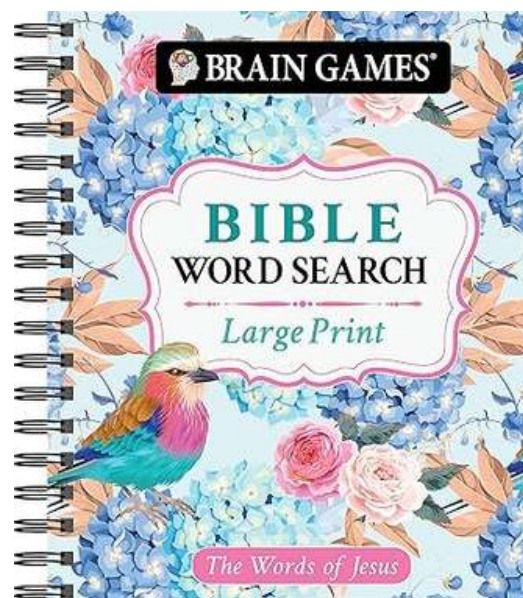
[VIEW PRODUCT](#)



[VIEW PRODUCT](#)



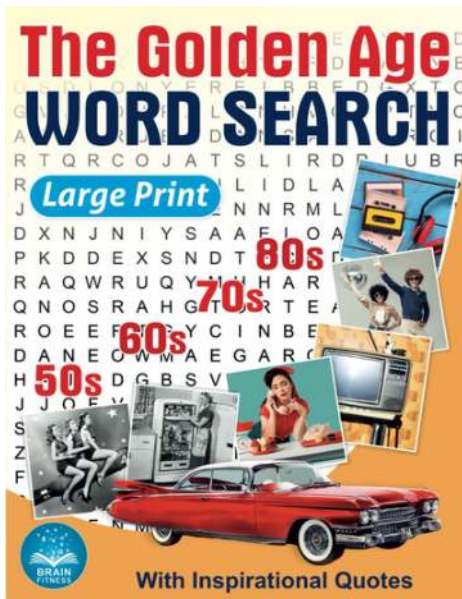
[VIEW PRODUCT](#)



[VIEW PRODUCT](#)

# PUZZLE BOOKS

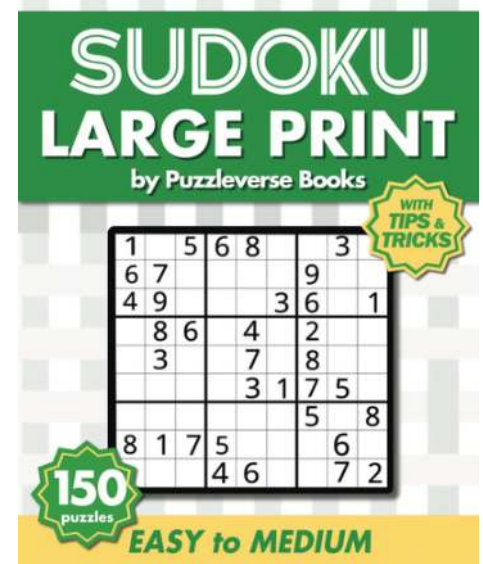
Puzzle book activities are a great way to stimulate your partner's brain in a fun, yet challenging way. These large-print puzzle books are a great way for your partner to continue previously enjoyed activities.



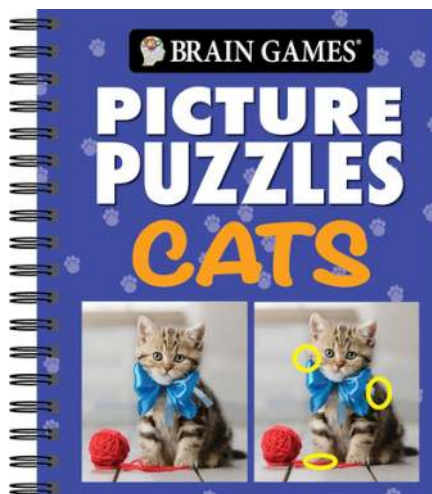
[VIEW PRODUCT](#)



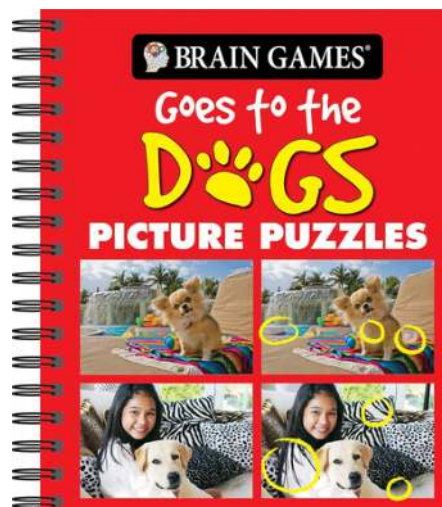
[VIEW PRODUCT](#)



[VIEW PRODUCT](#)



[VIEW PRODUCT](#)

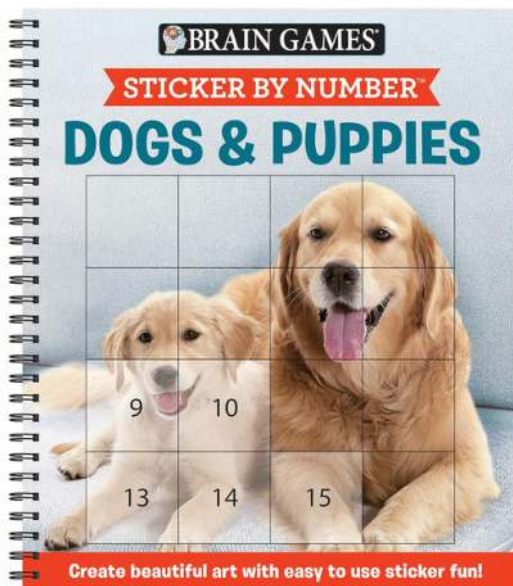


[VIEW PRODUCT](#)

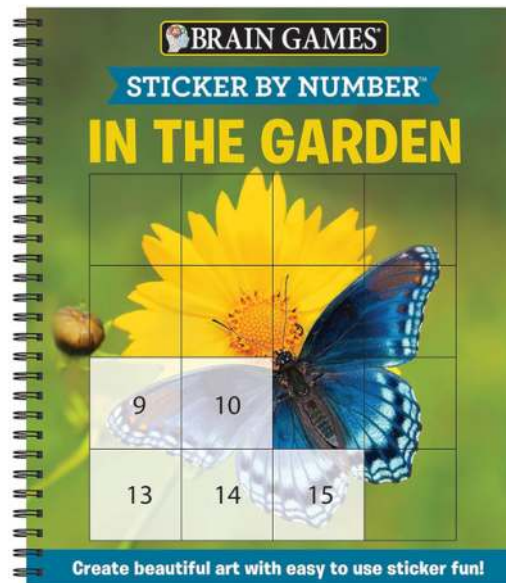


# STICKER BY NUMBERS

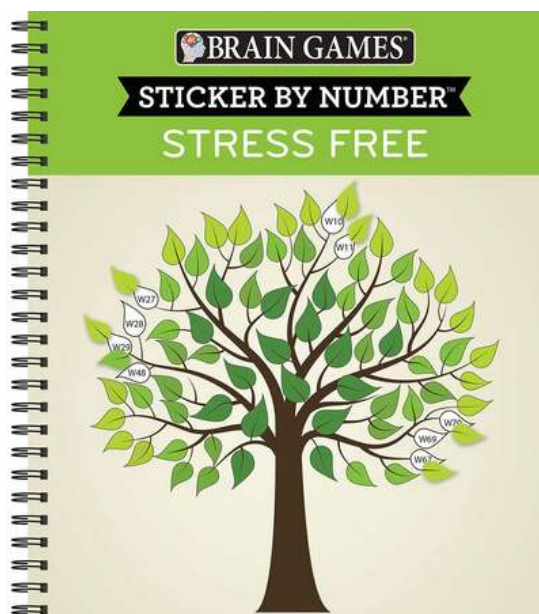
Sticker by Number activities offer a fun, engaging way to stimulate your partner's brain while providing a bit of a challenge. Simply find, peel, and stick each piece to reveal vibrant artwork—combining creativity with cognitive exercise.



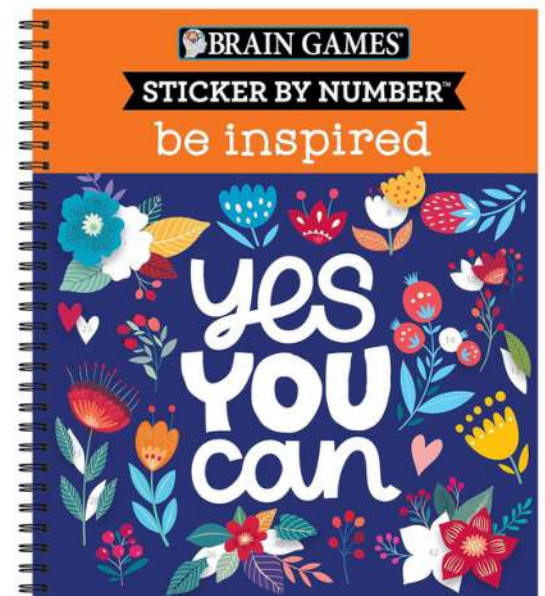
[VIEW PRODUCT](#)



[VIEW PRODUCT](#)



[VIEW PRODUCT](#)



[VIEW PRODUCT](#)

# JIGSAW PUZZLES

Jigsaw puzzles come in a variety of piece counts. Below include a jumbo 12-piece puzzle by Bambu Care (top left) and a 13, 35, and 63-piece puzzle set by Relish. Select the puzzle count that best meets your partner where they are at, but still provides a little challenge.

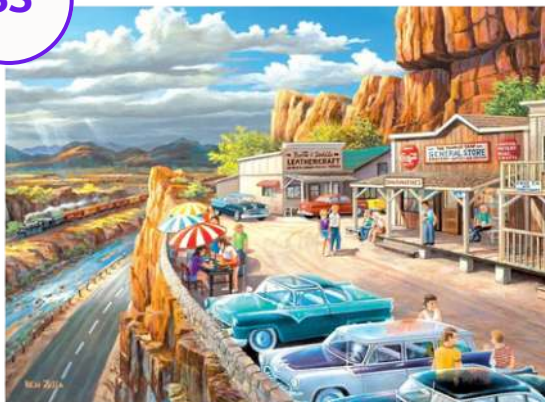
12

[VIEW PRODUCT](#)

13

[VIEW PRODUCT](#)

35

[VIEW PRODUCT](#)

63

[VIEW PRODUCT](#)



# WOODEN PUZZLES

The Wooden Tangram Puzzle (left) and Wooden Tile Matching Activity (right) offer engaging cognitive exercises for people with dementia, promoting mental stimulation and problem-solving.



[VIEW PRODUCT](#)



[VIEW PRODUCT](#)

# REUSABLE ACTIVITIES

Reusable activities like erasable word searches (left) and the bubble word search game (right) are great for people with dementia. They offer an easy way to stay mentally active and can be used multiple times. These activities help engage the mind while being simple and enjoyable.



[VIEW PRODUCT](#)



[VIEW PRODUCT](#)



# MATCHING GAMES

Vibrantly colored matching games by Assistex (left and right) and Keeping Busy (bottom).



[VIEW PRODUCT](#)



[VIEW PRODUCT](#)



[VIEW PRODUCT](#)

# REUSABLE WATER PAINTING

An error-free painting experience. All that's needed is a paintbrush and water! Each set comes with 24 reusable canvases.



[VIEW PRODUCT](#)



[VIEW PRODUCT](#)



# MODEL BUILDING KITS

Kraftic Woodworking Building Kit (top left), Klever Kits 4 DIY Wooden Race Cars (bottom left), and Modern Birdhouse Woodworking Kit (right) can be great gift ideas for people in the early stages of dementia who love working with their hands and assembling things.



[VIEW PRODUCT](#)



[VIEW PRODUCT](#)



[VIEW PRODUCT](#)



# NO-SEW BLANKET KIT

This No-Sew Blanket Kit is a simple and engaging activity for someone with dementia to do with or for a grandchild. The kit includes 30 polar fleece squares with Squishmallows designs, and no sewing is required—just follow the step-by-step instructions to create a fringed-edge blanket. This activity encourages creativity and offers a calming, hands-on experience. It's an ideal project for family bonding or a thoughtful gift for Squishmallows fans.



[VIEW PRODUCT](#)

# WINDOW BIRD FEEDER

Bird feeders are a great way to get up close and personal with nature. You can suction a bird feeder to the outside of your house window for a great view of the wildlife in your own yard! Great for individuals who may be bed or chair bound.



[VIEW PRODUCT](#)



[VIEW PRODUCT](#)

# SENSORY CHEW NECKLACE

Crafted from food-grade silicone, these sensory chew necklaces offer a therapeutic solution for individuals prone to chewing on themselves, their clothing, or objects, aiding in the alleviation of stress and anxiety.



[VIEW PRODUCT](#)



[VIEW PRODUCT](#)



# WALKER ACCESSORIES

Whether you are going for cute or functional there are options to dress up any walker or rollator.



[VIEW PRODUCT](#)



[VIEW PRODUCT](#)



[VIEW PRODUCT](#)



[VIEW PRODUCT](#)

# WHEELCHAIR ACCESSORIES

Whether you are going for cute or functional there are options to dress up any wheelchair.



[VIEW PRODUCT](#)



[VIEW PRODUCT](#)



[VIEW PRODUCT](#)



# REBORN BABYDOLL

The JIZHI Lifelike Reborn Baby Doll is a 17-inch baby doll, which makes for a great therapeutic baby doll for people living with dementia. Therapeutic baby dolls can give people a sense of purpose and be very calming.



[VIEW PRODUCT](#)

# PERFECT PETZZZ

The original breathing pet by Perfect Petzzz is available as a cat or dog and in various breeds. The Perfect Petzzz makes for a great therapeutic pet and comes with a pet bed and brush. Therapeutic pets can promote calm, decrease agitation and wandering, improve social interaction, and improve a person's overall quality of life. This particular model only breathes and will breathe continuously for up to 2 months before requiring a battery change.



[VIEW PRODUCT](#)



[VIEW PRODUCT](#)

# JOY FOR ALL PETS

Robotic interactive pets such as birds, dogs, and cats. Joy for All Pets respond to your voice and touch. They make for a great therapeutic pet. Therapeutic pets can promote calm, decrease agitation and wandering, improve social interaction, and improve a person's overall quality of life.



[VIEW PRODUCT](#)



[VIEW PRODUCT](#)



[VIEW PRODUCT](#)



# FIDGET PETS

These fidget pets offer the combined benefits of therapeutic pets and fidget tools, helping to promote calm, reduce agitation and wandering, and encourage social interaction. Designed to enhance overall well-being, they provide a comforting and engaging experience that can improve quality of life for those who need it.



[VIEW PRODUCT](#)



[VIEW PRODUCT](#)



[VIEW PRODUCT](#)



[VIEW PRODUCT](#)

# EMOTIONAL REGULATION PRODUCTS

Vibrating Sensory Pillow (top), Breathing Pal 'Kyle' (bottom left) and Purrble with Dynamic Heartbeat and Soothing Purr (bottom right) are all great products for individuals who need help regulating their emotions and breathing.



[VIEW PRODUCT](#)



[VIEW PRODUCT](#)



[VIEW PRODUCT](#)



# SENSORY PRODUCTS

Maze Sensory Toys (top left), Sensory Tubes (top right), Stretchy Sensory Strings (bottom left), Sensory Notebook Journal (bottom right) are great for individuals with sensory needs.



[VIEW PRODUCT](#)



[VIEW PRODUCT](#)



[VIEW PRODUCT](#)



[VIEW PRODUCT](#)

# CROCHETED SENSORY PILLOW

This sensory pillow offers a safe and discreet way to keep hands busy, helping to relieve anxiety and boredom.



[VIEW PRODUCT](#)

# THE HUG

The hug is a soft, comforting companion designed to reduce anxiety and promote relaxation. Its weighted limbs and heartbeat function provide a soothing, hug-like experience. Equipped with a built-in music player, it can play personalized playlists, enhancing the calming effect.



[VIEW PRODUCT](#)



# WEIGHTED LAP BLANKET

This leaf-shaped weighted lap (5#) blanket is crafted from soft, velvety microfiber for a comfortable, skin-friendly feel.

Designed for versatility, it can be used on the lap, shoulder, or knee, providing targeted relief for muscle tension with evenly distributed glass beads. Its leaf-inspired design adds a unique touch while maintaining full functionality. Available in multiple colors, it includes a storage box and carry bag for easy transport.



[VIEW PRODUCT](#)



# BANDANA CLOTHING PROTECTORS

Bandana style clothing protectors with adjustable neck size. Made from cotton and micro-fleece, these protectors are highly absorbent to keep your partner dry by quickly soaking up drool and spills without leaking through clothing. Each set includes three colors, available in a variety of shades to suit any style.



[VIEW PRODUCT](#)

# HEATED SCARF

This heated scarf package includes a soft scarf, a mobile power bank, an instruction manual, a thank-you card, and a gift box. The heated scarf is a cashmere-like texture, soft and skin-friendly, comfortable and breathable, combined with graphene heating technology to achieve a double warmth. It has an adjustable thermostat with three temperature settings—131°F, 113°F, or 95°F.

**Please note:** For safety, it is essential to use any heated device under supervision. Additionally, it's important to regularly inspect the person's skin to ensure their skin remains in good condition and free from any damage or irritation.



[VIEW PRODUCT](#)

# WEARABLE BLANKET

This wearable blanket features pocket sleeves for hands-free comfort, fitting like a robe or cape. A perfect gift for people who are often cold. The robe style makes it easy to take on and off.



[VIEW PRODUCT](#)

# SHERPA BLANKET

Made from soft, durable 350GSM ultrasonic rice flower velvet, it includes two front pockets for convenience and comes in dark colors to help minimize visible dirt. A perfect gift for people who are often cold.



[VIEW PRODUCT](#)



# WOMEN'S ADAPTIVE BED JACKET CAPE

This adaptive women's bed jacket offers easy self-dressing with simple closures and zippers designed for individuals with limited mobility. It's sleeveless, draping comfortably over the shoulders for added warmth and is made from lightweight, soft fleece. It can be worn as a bed jacket, wheelchair poncho, or shawl wrap. Available in one-size with various colors.



[VIEW PRODUCT](#)

# OPEN FRONT PONCHO CAPE

This ultra-soft, cozy shawl provides all-day warmth and can be draped over any outfit. Its oversized design makes it versatile for multiple uses: wear it as a winter poncho, layer it as a long cardigan, or spread it out as a picnic blanket. Featuring an open front with tassel hem, it's a stylish, functional accessory for cooler weather.



[VIEW PRODUCT](#)

# GOWNS

The Tear Away Gown (left) and House Dress (right) offer a functional yet stylish solution for those with dressing or toileting challenges. Designed for ease and comfort, these garments provide accessible, fashionable options that make dressing and using the bathroom simpler.



[VIEW PRODUCT](#)



[VIEW PRODUCT](#)

# FUZZY SOCKS

Non-slip fuzzy socks with gripping rubber tread design to reduce risk of falls.



[VIEW PRODUCT](#)



# SLIPPERS

Promote comfort and safety around the house with slippers featuring covered heels, anti-slip soles, and cozy, fuzzy linings.



[VIEW PRODUCT](#)



[VIEW PRODUCT](#)



[VIEW PRODUCT](#)



[VIEW PRODUCT](#)

# SHOES

Kizik's are best known for their heel rebound technology, making them an excellent choice for a convenient, hands-free footwear option (left). Lelsflt Wide Adjustable Diabetic Shoes offer a comfortable, wide-toe design ideal for individuals experiencing foot swelling, bunions, or arthritis (right).



[VIEW PRODUCT](#)



[VIEW FOR WOMEN](#)

[VIEW FOR MEN](#)

“

THE BEST GIFT  
COMES FROM THE  
HEART

IMPROVING QUALITY OF LIFE

# THE END

BRING A LITTLE JOY TO THOSE YOU LOVE

**For More Dementia Tips:**

